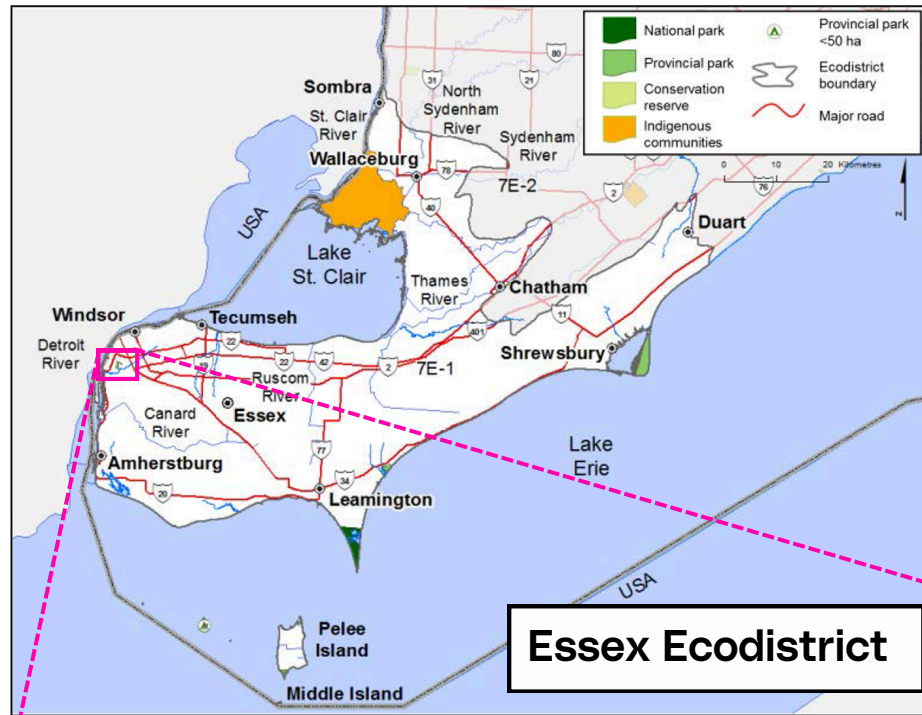




Sandwich Visionaries Worksheet

Ojibway National Urban Park and Local Species

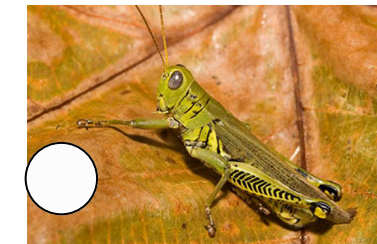
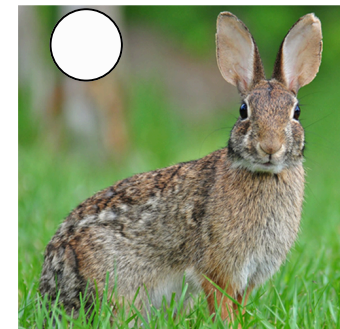
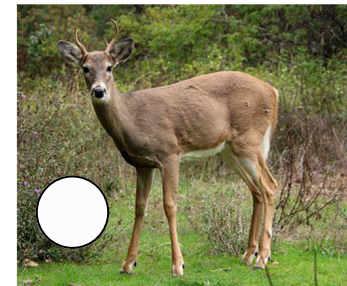
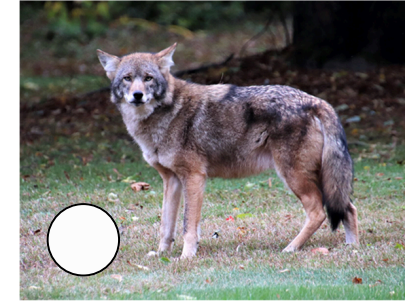


Species List

- 1.Black Oak Acorns
- 2.Big Blue Stem Grass
- 3.White Tailed Deer
- 4.Eastern Coyote
- 5.Differential Grasshopper
- 6.Monarch Butterfly
- 7.Meadow Jumping Mouse
- 8.Great Horned Owl
- 9.Eastern Grey Squirrel
- 10.Butterfly Milkweed Flower
- 11.Eastern Cottontail
- 12.Red Fox

Ojibway Park: Food Web

- 1.Using the numbers from the list on the left identify each species in the food web.
- 2.Using arrows draw the food web relations between these species found in the forests of Ojibway Park.

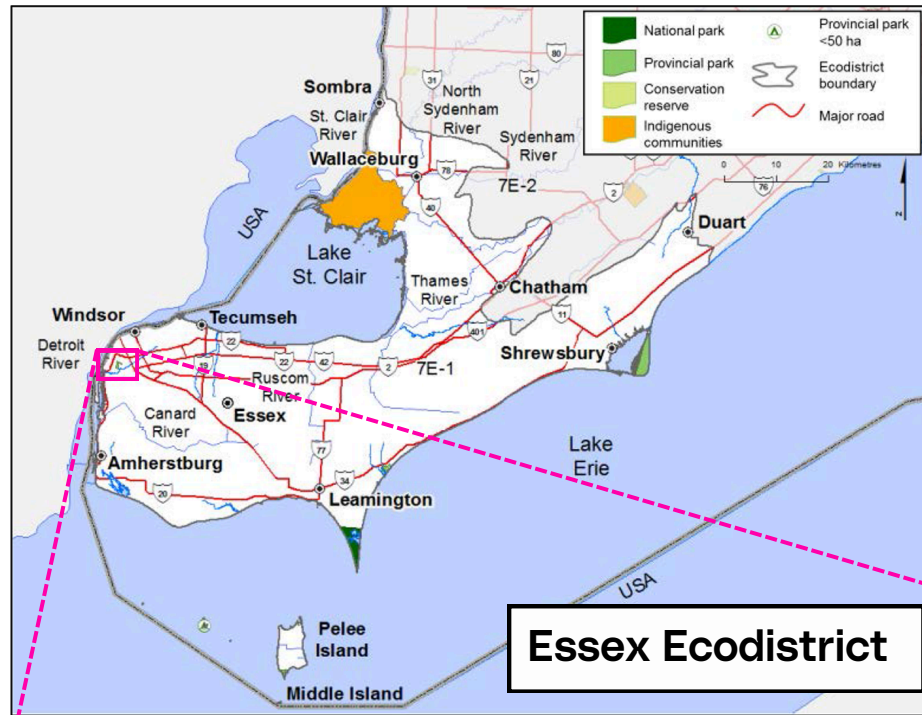


The candidate lands were selected based on natural heritage features and include public and privately held lands. Landowners will be engaged prior to designation of any lands.

Ojibway National Urban Park Study Area



Ojibway National Urban Park



Species List

- 1.Black Oak Acorns
- 2.Big Blue Stem Grass
- 3.White Tailed Deer
- 4.Eastern Coyote
- 5.Differential Grasshopper
- 6.Monarch Butterfly
- 7.Meadow Jumping Mouse
- 8.Great Horned Owl
- 9.Eastern Grey Squirrel
- 10.Butterfly Milkweed Flower
- 11.Eastern Cottontail
- 12.Red Fox

Ojibway Park: Food Web

- 1.Using the numbers from the list on the left identify each species in the food web.
- 2.Using arrows draw the food web relations between these species found in the forests of Ojibway Park.

